



PHOTO SERVICES API

November 2024

Xpressdocs Partners, Ltd. 1301 NE Loop 820, Fort Worth, TX 76131, USA

+1 817.547.9743 | www.xpressdocs.com

INTRODUCTION.....3

STEP 1: RETRIEVE SCENES.....3

 SAMPLE REQUEST.....3

 SAMPLE RESPONSE.....3

STEP 2: RETRIEVE PHOTO IDS4

 SAMPLE REQUEST.....4

 SAMPLE RESPONSE.....4

STEP 3: RETRIEVE THUMBNAILS4

 SAMPLE REQUEST.....4

 SAMPLE RESPONSE.....4

STEP 4: RETRIEVE PHOTO.....5

 SAMPLE REQUEST.....5

 SAMPLE RESPONSE.....5

ADDITIONAL CONSIDERATIONS5

PHOTO SELECTION USER EXPERIENCE6

Introduction

Photo Services allows a user of the Xpressdocs Marketing Platform to download images from third party photography services directly into their personal photo gallery. To integrate your photo service with Xpressdocs, you will need to provide four https endpoints as noted in the four steps below. Only companies you specify will have access to your service.

Step 1: Retrieve Scenes

A *Scene* is a collection of photos. The expectation is that a user has multiple such collections, generally one per topic or entity such as a listing. A user's email address will be used to retrieve all scenes that belong to the user. For this we expect a URL that accepts "email" as a parameter, and the response should return the *Listings* XML with all scenes, providing a scene ID, address, and zip code for each.

Sample Request

```
curl https://domain.com/scenes -d email=sample@email.com
```

Sample Response

```
<Listings>
  <Listing SCENEID="50008630">
    <AddressLine1>1234 Address</AddressLine1>
    <ZIP>75218</ZIP>
  </Listing>
  <Listing SCENEID="50008631">
    <AddressLine1>4567 Address</AddressLine1>
    <ZIP>75218</ZIP>
  </Listing>
</Listings>
```

If there is an error or the email is invalid, return an empty response.

Step 2: Retrieve Photo IDs

The user will select a scene. Before displaying all photos within the scene, image IDs will be queried. For this we expect a URL that accepts “sceneid” as a parameter, and the response should be a comma-separated list of photo IDs.

Sample Request

```
curl https://domain.com/photos -d sceneid=50008630
```

Sample Response

```
1234,5678,9123
```

If there is an error or the scene ID is invalid, return an empty response.

Step 3: Retrieve Thumbnails

After retrieving the list of photo IDs, the thumbnails are queried by sending a separate request for each photo ID. For this, we expect a URL that accepts “sceneid” and “photoid” as parameters, and the response should be a URL to the thumbnail image or return the image directly.

Sample Request

```
curl https://domain.com/thumbnails -d sceneid=50008630 -d photoid=1234
```

Sample Response

```
https://domain.com/thumbnails/1234.jpg
```

The thumbnail can be of any size, although optimal sizing would have a maximum width or height of 250px.

Note: The response can also be binary data containing the image. Please let us know if you prefer this option. The full-size photo service from [Step 4](#) will need to also return binary data in this case.

Step 4: Retrieve Photo

After the user selects a photo, the full-size image is queried. For this, we expect a URL that accepts “sceneid” and “photoid” as parameters, and the response should be a URL to the high-resolution print image or return the image directly.

Sample Request

```
curl https://domain.com/photos -d sceneid=50008630 -d photoid=1234
```

Sample Response

```
https://domain.com/thumbnails/1234.jpg
```

Note: The response can also be binary data containing the photo. Please let us know if you prefer this option. The thumbnail service from [Step 3](#) will need to also return binary data in this case.

Additional Considerations

If you would prefer all requests be authenticated requests, provide the username/password, and we’ll use that for Basic Authentication. No other authentication schemes are supported at this time.

```
curl -u username:password https://domain.com/scenes -d  
email=sample@email.com
```

Please let you know if you require a request method of GET over POST.

Photo Selection User Experience

The following illustrates how scenes and photos are presented to the user.

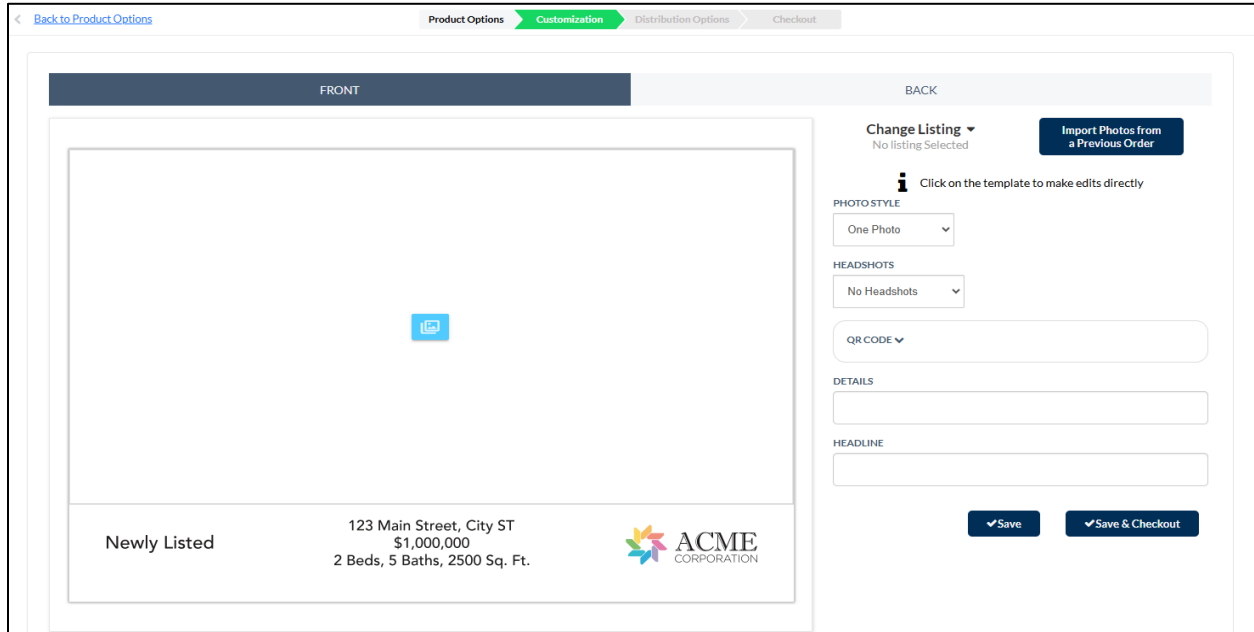


Figure 1: Product Customization Options

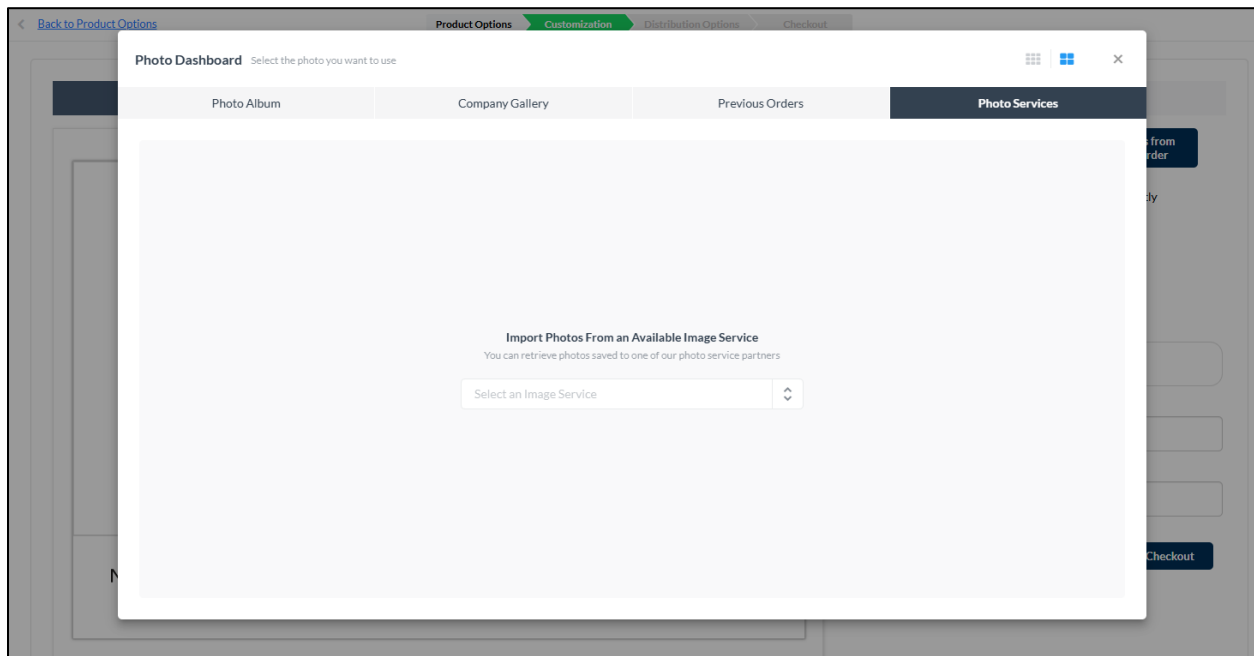


Figure 2: Photo Service Selection

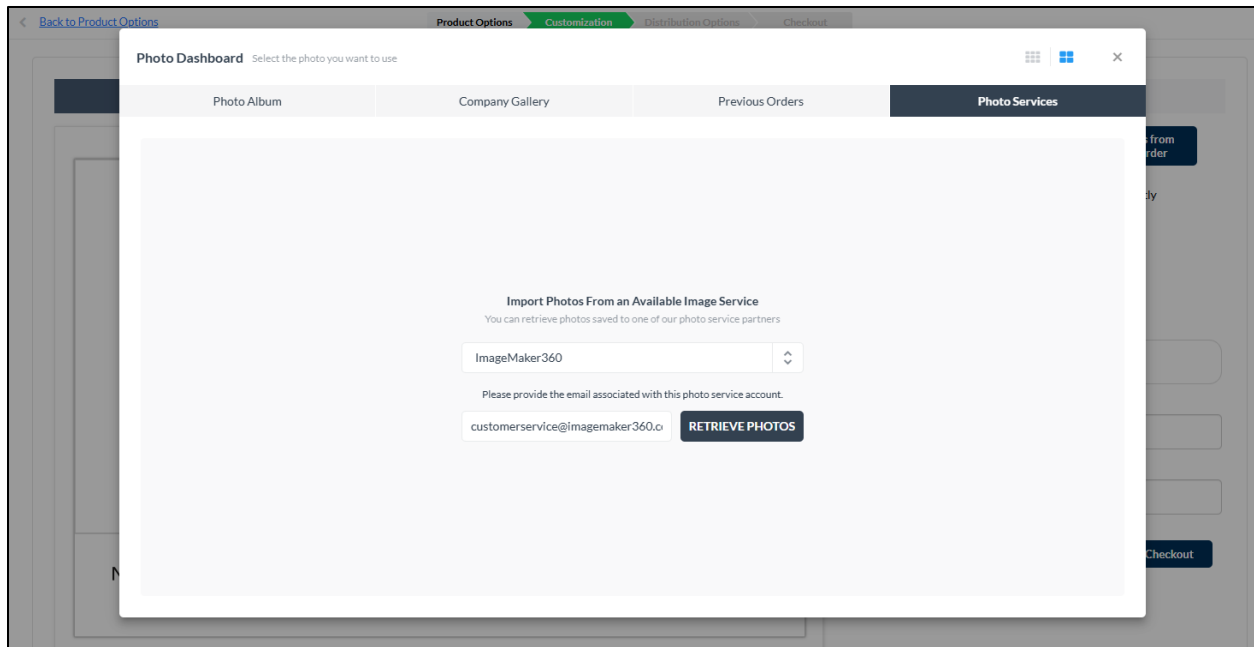


Figure 3: Photo Service Login

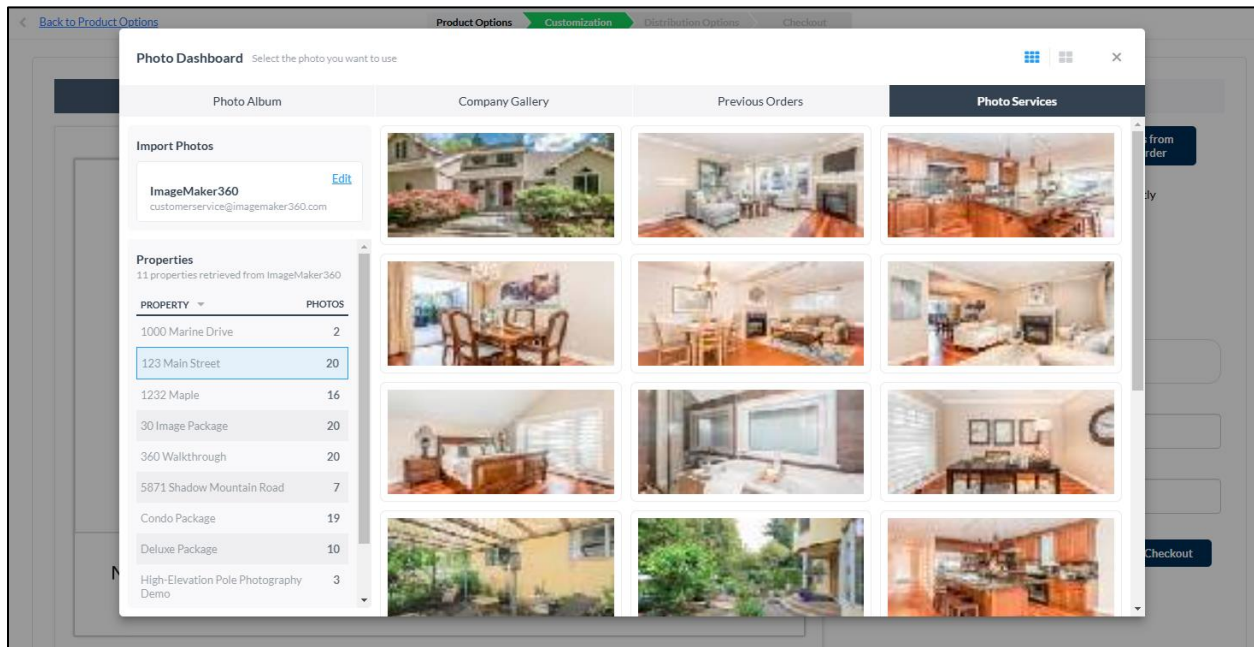


Figure 4: Scene Selection and Photo Selection

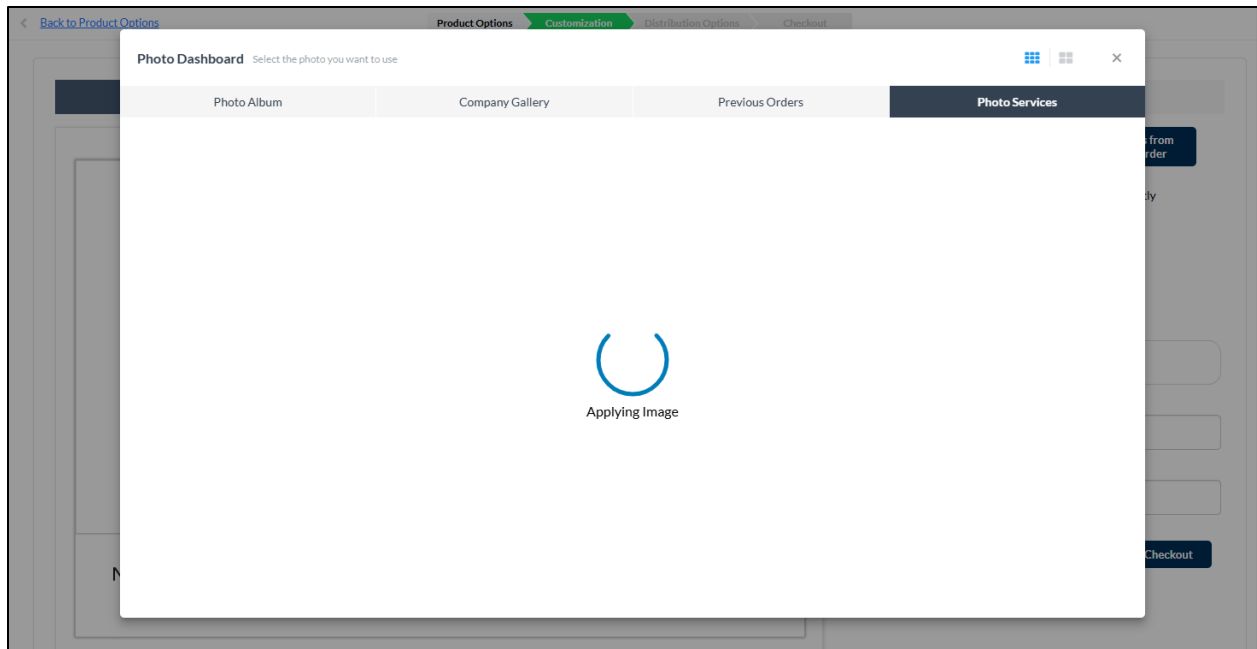


Figure 5: Photo Selection

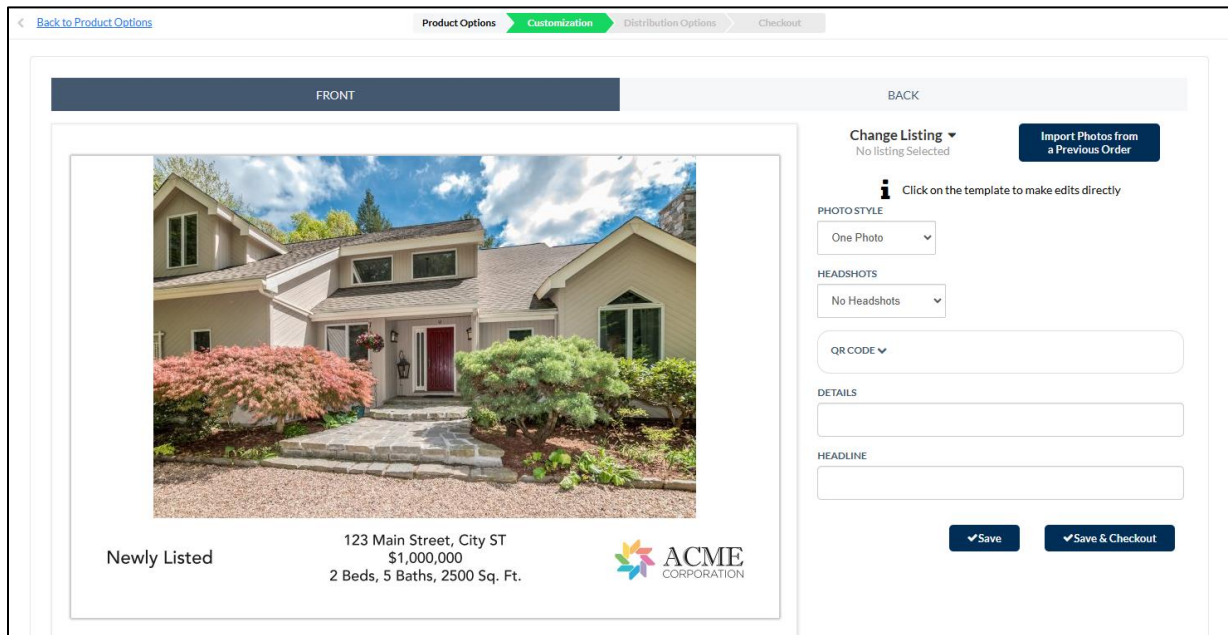


Figure 6: Photo Display on Product

Questions pertaining to implementation and general technical support may be directed to photointegrations@xpressdocs.com.